



# Elastomer Specialties, Inc.

## Custom Molded & Spray Applied Urethane Parts

### Custom Molded Urethane Parts

**Elastomer Specialties'** area of expertise, for over 44 years, has been producing **Custom Molded Polyurethane Parts and Products** for customers worldwide. Regardless of how intricate the design, size, shape, color, or required hardness, we have both the experience and technology to provide you with the **Quality, Durability and Reliability** you are looking for. If you can provide us with professional drawings designed on CAD, or even concept sketches, we can produce the mold and give you the finished product you are looking for.



### Roller Lagging

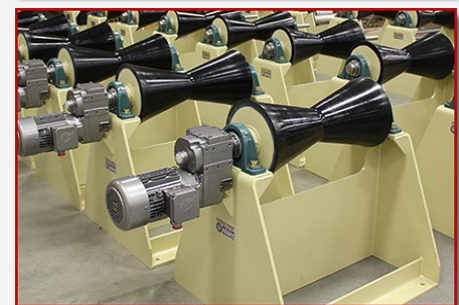
**Elastomer Specialties'** RibbonFlo technology is next to none when it comes to the latest in an abrasive resistant, cosmetically appealing and durable protective coating for conveyor roller cores. At ESI we started perfecting our RibbonFlo process over a decade ago and since that time have been offering our customers the highest quality in a urethane coated roller. Our RibbonFlo urethane formulation is engineered to permanently bond to the steel core and provide a smooth, glass like finish when cured.

At **Elastomer Specialties**, we have the experience and references to back up our claims as being #1 when it comes to the RibbonFlo process. We formulated the material, manufactured the application equipment and perfected the delivery system, that's why we are the Industry's Leader in RibbonFlo application!



### Pipeline & Oilfield Parts

**Elastomer Specialties** is known worldwide, for their high performance, custom cast urethane parts for both the oilfield and pipeline industry. Our expertise in producing high quality, long lasting parts such as **Rack Padding, Die Liners, Flat and Vee Rollers, Wheels, Fork Tips, Forklift Covers** and **Cut Back Cups** goes back over 40 years. In the oilfield business, our long time customer base also dates back to early 80's where we have been private labeling products to some of the most recognized names in the industry. The demand for materials and products in these industries that can withstand the most extreme conditions is a daunting task. Over the years, ESI has engineered cast urethane materials that will withstand some of the toughest conditions and still give our customers the performance and durability they are looking for.



2210 South Highway 69, Wagoner, OK 74467 \* 1-800-786-4244 \* Tel: 918-485-0276 • Fax: 918-485-0253

[www.elastomer.com](http://www.elastomer.com)



### Spray Applied Coatings

**Elastomer Specialties** has taken their expertise to a whole new level. Many casting applications are far too slow, that's why we incorporated the use of "**FAST SET**" Spray Applied Coatings. With the advent of this new technology we have the ability to install durable, long lasting Urethane and Hybrid Urethane coatings to an unlimited number of surfaces. This new chemistry offers 5-10 second gel times and Shore hardnesses that range from 65A up to 65D.

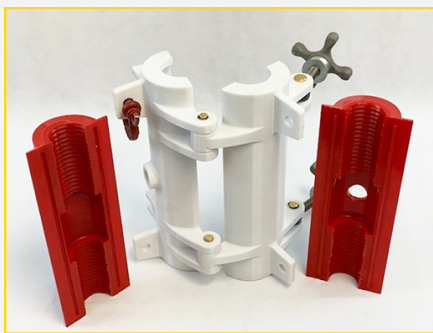


### 3-D Printing

**Elastomer Specialties** recently raised the bar when it introduced the "**Ultimate Technology**" in rapid mold and sample part production, **3-D Printing**. Driven by performance, ESI has set its sights to the future and now has the ability to provide its customers with the most accurate, stable and durable part or mold possible. ESI has 2 STRATASYS 3-D printers: Fortus 250MC and Fortus 900MC. The Fortus 250MC uses the extremely tough ABS plus thermoplastic material and has the ability to produce a part with the accuracy within  $\pm 0.24\text{mm}$  ( $\pm 0.0095\text{in.}$ ). The Fortus 900MC has a larger printing base and has the ability to use 4 different materials: ULTEM 9085, Polycarbonate, ASA, and Nylon 12 Carbon Fiber. Our 3-D printing process is fast, accurate and cost effective. It allows our customers to evaluate and real-life test their parts.



STRATASYS Fortus 900MC



### Machine Shop • Tooling Design & Production • 3-D Printing • In-House Machine Shop!

If you are in the Oilfield, Pipeline, Automotive, Industrial or Manufacturing Industries, ESI is your number 1 source for Custom Cast Urethane Parts and Rapid Mold Production using the latest in 3-D Printing Technology. Our technicians, specialized equipment and advanced technology can assist you in taking your project from inception through design to prototyping, mold/tooling production and casting, where we provide you with a part that meets your highest expectations. Our Turn-Key operation assures our customers that nothing is outsourced. When you come to ESI, be assured that we are your **One Stop Shop!**

